

FROM DIDCOT TO ICELAND VIA WOKING AND BEDDINGTON

Duncan Mackay
Regional Director
Countryside Agency



A map for this session

- What is the Countryside Agency?
- Why we welcome Renewable Energy
- Why we object to inappropriate major developments in our protected landscapes
- What future countryside do we all want?

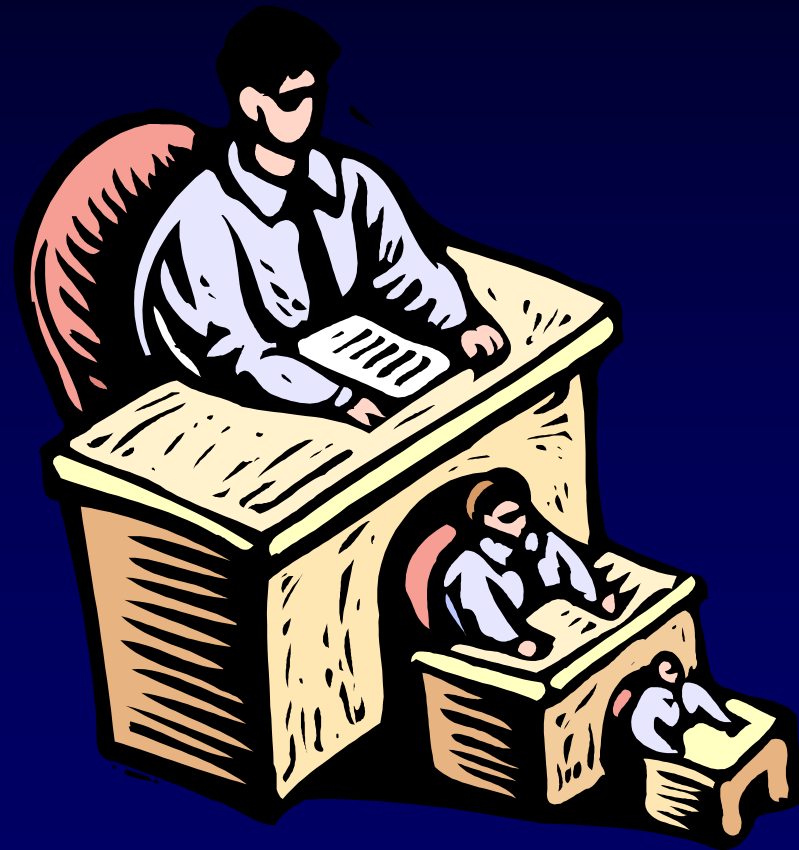


Countryside Agency is working to:

- Make life better for people in the countryside, and;
- Improve the quality of the countryside for everyone

Countryside Agency: priority outcomes

- Empowered, active and inclusive communities
- High standards of rural services
- Vibrant local economies
- All countryside managed sustainably
- Recreation infrastructure that's easy to enjoy
- A vibrant and diverse urban fringe providing better quality of life



Countryside Agency: main roles

- Statutory champion and watchdog
- Influencing and inspiring solutions through know how and show how
- Delivering where we are best placed to add value



Why the Countryside Agency welcomes Renewable Energy



- CA supports RE as a potential economic trigger for rural regeneration eg links with biomass, biofuels, solar pv, hydrogen, wind & water
- CA supports RE through the Community Renewables Initiative....BUT
- CA is also the Government's statutory adviser on landscape so we need to ensure it is not degraded

Belief in a sustainable future

- CA believes in a future for RE in the SE
- CA wants to ensure different RE technology brings genuine benefits to rural people & places and urban fringe; that developments are informed by landscape character assessment and address all SD objectives ...BUT
- we should think first and develop second to avoid repeating past mistakes



Let's waste energy!

- UK energy consumption figures for 1995 show colossal 62% of all energy went to buildings... (incl. 5% on building materials & 5% on transport of building materials)
- Add in the inefficiency losses from electricity transmission and generation...



Past mistakes to avoid in future



- Gross environmental damage of coal and coal based electricity
- Thousands of years of toxic by-products of nuclear electric industry
- Colossal biospheric impacts of oil exploitation: spillages; petrochemical industries; atmospheric pollution from vehicles...global warming
- IT'S NOT CLEVER &
- IT'S NOT SMART

Potential future of RE in SE

- A future for benign energy that:
- Minimises waste
- Minimises environmental impacts
- Minimises pollution &
- Maximises social acceptability and Quality of Life...



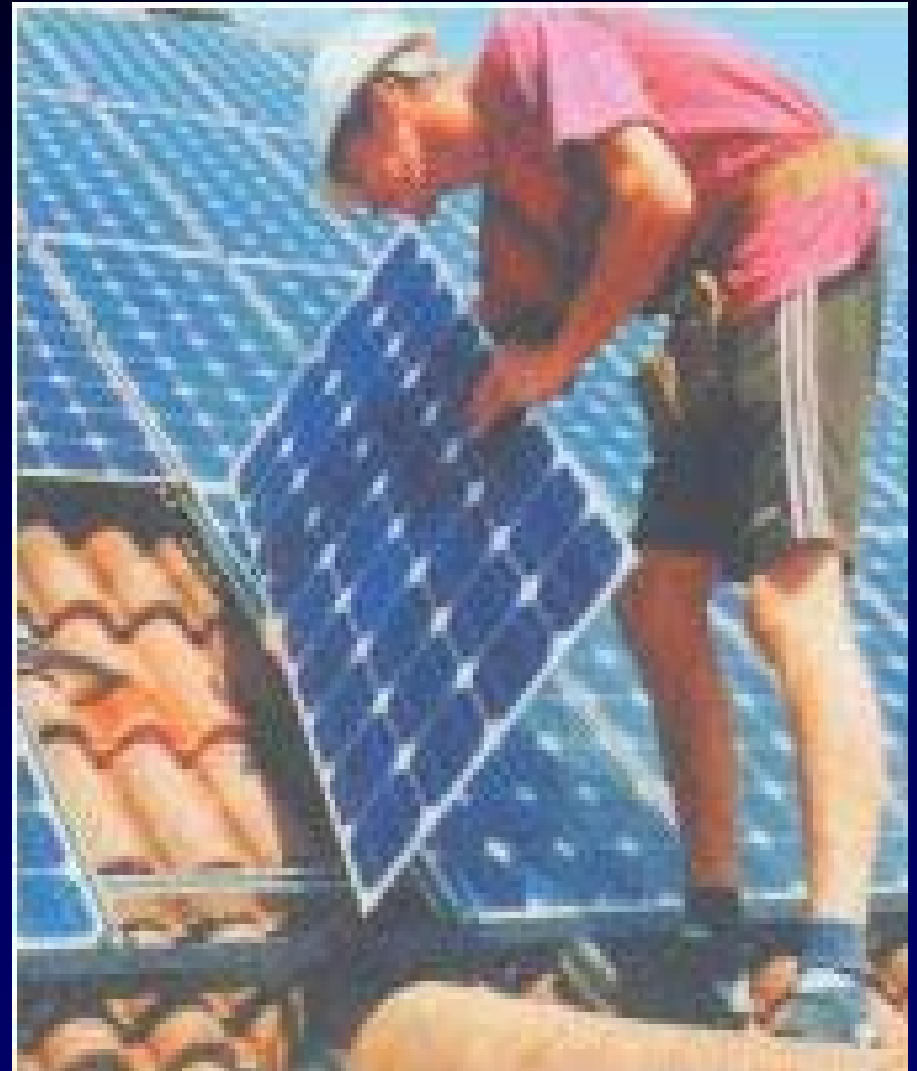
DIDCOT to ICELAND



- My journey today begins with the past (sorry Didcot) and ends in a future Iceland type hydrogen economy
- In between we have the here & now with confusion, complexity, waste & conflict BUT
- Also ingenuity and creativity illustrated well by Woking Borough Council & BedZED

Via WOKING

- Woking BC has thought the seemingly unthinkable...how to end fuel poverty...and to do it whilst saving money & creating real sustainable development
- WBC is succeeding and it's members & officers are keen to export the benefits of their work



SUCCESS...what has WBC done?

- Thought first
- Established sustainable principles
- Created a practical & innovative plan of action
- Done it!
- Measured success for others to use

TOOLS...Woking's plans for a sustainable future

- Island Grid
- Rigorous modelling/analysis
- Separate company/joint venture
- Solar PV
- Hydrogen Fuel Cell
- Retrofitted insulation
- Integrated new build...IT'S SMART

Can or Can't?



- So why can't:
- ...all institutions think like this?
- ...other governance bodies follow this lead?
- ...fuel poverty be ended?
- ...innovators become mainstream?

Via **BEDDINGTON**

- The home of BedZED (Beddington Zero Energy Development)
- Consortium of Sutton LBC, Ove Arup, Gardiner & Theobald, Peabody Trust, Bill Dunster Architects & BioRegional



MORE SUCCESS...what has BedZED done...?

- Thought first
- Established sustainable principles
- Created a practical & innovative plan of action
- Done it!
- Measured success for others to use

PRACTICAL IDEAS...BedZED's holistic solutions for energy use

- Reducing energy needs so that RE is viable for the whole supply
- Insulation, CHP and solar pv installed
- Designed for less car dependent lifestyle
- Maximisation of local, recycled materials or those with low embodied energy
- On-site composting & recycling, bulk deliveries of organic food and groceries
- IT'S CLEVER

Can or Can't



- So why can't all new buildings be developed using the same energy principles?
- Why can't we use BedZED principles in the SE Growth Areas and integrate rural fuel & materials supply with urban life?
- Why can't we minimise UK energy consumption by intelligently preventing energy waste year on year?

RURAL PLACES IN SE

- Relatively heavily populated (c4m.) but close to major urban centres eg London & SE towns (11m.)
- Distant from some services but major communications networks close by
- Locally distinct characteristics with one third nationally important countryside
- Environmental economy worth £7.6 billion pa. eg farming & tourism but only part of a mixed rural economy
- Relatively affluent but pockets of deprivation

Local Rural Negotiation

- Agriculture & forestry needs a new economic impetus – biofuels; biomass; onshore wind; biogas; HFC attached to hothouses; solar arrays ?
- Scale of development appropriate to local needs & respecting distinctive rural character
- Engagement with and respect for local community opinion.
- Sequential approach using degraded land first



Why we sometimes comment on major developments in AONBs

- Location
- Scale
- National need
- Impacts
- CA does not view rural places as:
- Free resource to exploit
- Nationally unimportant
- Legally unprotected



Working together to avoid conflict in SE AONB/SSSIs

- “Plans to construct wind farms in scenic upland areas have run into serious, and understandable, opposition. More effective use must be made of the land use planning system to help the deployment of such energy systems whilst respecting people’s legitimate wishes to protect cherished landscapes and wildlife” Royal Commission on Environmental Pollution 2000
- We need to work together to: prevent energy waste; fit the most appropriate RE to locations & needs; and develop long term clean & benign RE solutions

...and finally



- We need to think very hard about how much energy we are wasting currently in buildings & construction
- Actively and urgently implement holistic long term solutions to wasted energy
- Think now about the far future of energy and take sensible steps towards it...solar, hydrogen, etc
- Do not repeat the mistakes of the past and damage our treasured landscapes for the sake of a short term fix

Further contact:



- Email [duncan.mackay](mailto:duncan.mackay@countryside.gov.uk)
- [@countryside.gov.uk](mailto:duncan.mackay@countryside.gov.uk)
- Web site [www.](http://www.countryside.gov.uk)
- [countryside.gov.uk](http://www.countryside.gov.uk)
- Telephone 0207 340 2900

Thanks for listening...